

# IMPACT REPORT

*Inspiring Hope Together.*



FISCAL YEAR 2025



# Looking back with gratitude. Moving forward with purpose.

A Message from Leadership

As we reflect on this past year, we are filled with gratitude for the unwavering support shown by our community. Every child we served and every family we uplifted was made possible because people like you continue to believe in the mission of The Children’s Center.

We know the needs in our community are great, but we also know that hope grows stronger when we stand united. Your support fuels our progress and ensures we can continue providing the care and resources children and families rely on.

Your generosity has given us the strength to move forward with purpose. This year, we took a historic step with the launch of our endowment, a long-term investment that strengthens our ability to serve future generations. It represents our shared belief that every child deserves a future they can look forward to.

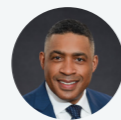
Behind each success in this report is a story of resilience. Children learning new skills that build confidence. Families discovering stability after uncertainty. Volunteers and staff showing up day after day to create a place where children feel supported and understood.

*“Your support fuels our progress.”*

Thank you for believing in this work and for helping us shape a brighter and more promising future.



*Desiree Jennings*  
**Desiree Jennings**  
President & CEO



*Dennis Edwards*  
**Dennis Edwards**  
Board Chair

Behind every number is a name, a face, and a future.  
*See the stories inside.*

# Table of Contents

- 2** **Moving Forward with Purpose**  
*A Message from Leadership*
- 4** **Who We Are**  
*Our Mission & Vision*
- 6** **Where Confidence Takes Shape**  
*A Behavioral Health Services Highlight*
- 8** **Summer Moments, Lifelong Impact**  
*A Community Engagement Highlight*
- 10** **The Call That Changed Everything**  
*A Foster Care Story*
- 12** **For Children. For Families. Forever.**  
*The Children’s Center Endowment*
- 14** **Every Number Tells a Story**  
*Impact Statistics*
- 16** **The Hands and Hearts Behind the Mission**  
*Volunteer Statistics*
- 18** **Investing in Every Story**  
*Financial Statement*
- 20** **The Story Builders: Thank You**  
*Donors, Board, and Partners*



# The Heart of Our Work

**MISSION**

To help children and families shape their own futures.

**VISION**

We envision a healthy community that heals through meaningful connectedness and support.

**CORE VALUES**

Can do attitude, Dedicated, Passionate, Accountable, Respectful

# Where Compassion Meets Possibility

## WHO WE ARE

Since 1929, The Children's Center (TCC) has become one of the largest comprehensive child serving agencies in the state serving metropolitan Detroit's most vulnerable children and families who have been impacted by:

- Abuse and neglect
- Behavioral health challenges at home, in school, and in the community
- Emotional and psychological challenges
- Intellectual and developmental disabilities, including autism

Our dedicated staff provides services to children with diagnosed mental illness and/or intellectual developmental disabilities and children at risk of abuse and/or neglect, and their families. Our specialized services are focused on three main areas:

- Behavioral Health
- Child Welfare
- Community Engagement and Advocacy

## OUR SERVICES

We look at all factors impacting a child's functioning - family, school, social environments, life experiences, and traumatic experiences and exposure. Our services include:

### Behavioral Health Services

- **Clinical Services** - Outpatient and home based individual and family therapy, infant and early childhood behavioral health, supports coordination, social skills groups, and independent living skills development
- **Medical Services** - Psychiatric evaluations and ongoing medication management
- **Psychological Services** - Psychological and neuropsychological testing and evaluation (for cognitive, developmental, social, and emotional diagnosis and treatment recommendations) & Autism Spectrum Disorder testing

### Treatment Modalities Include:

- Child and family centered care
- Intensive care coordination wraparound services
- Motivational interviewing
- Parent peer support
- Trauma-informed care across all services
- Trauma-Focused Cognitive Behavioral Therapy

### Child Welfare

- Foster parent recruitment & licensing
- Foster home placement, ongoing monitoring, and support
- Adoption services in finalizing a child's forever home
- Independent Living placement, ongoing monitoring, and support

### Community Engagement and Advocacy

#### • Programs & Services

- Tau Beta Family Success Center
- Art therapy
- Boutique with clothing and essentials
- Case management services
- Children Trust Michigan Prevention Partner
- Community events
- Community library and literacy support
- Prevention and education programming
- Summer camp

#### • Advocacy

- Crisis to Connection
- Consumer Advisory Council
- Youth Advisory Council
- Youth United
- Wayne County Fatherhood Initiative



# Where Confidence Takes Shape.

A behavioral health program focused on life skills, independence, and growth



For many children, everyday moments like making breakfast, folding laundry, or grocery shopping are simply part of growing up. For children with developmental disabilities, those moments can feel overwhelming without the right support.

That is where The Children's Center's Real Life Learning Program comes in.

Designed for children with developmental disabilities and their families, the Real Life Learning Program helps participants build the practical, real-world skills they need as they move toward adolescence and adulthood. Inside a space designed to

feel like a small studio apartment, children practice everyday tasks in an environment that is safe, supportive, and empowering.

From learning how to cook meals and safely use kitchen utensils, to washing, folding, and ironing clothes, making a bed, and cleaning shared spaces, each activity builds independence and confidence. During the summer, the program expanded into two focused groups. One group explored job readiness skills like creating a resume, interviewing, and applying for jobs. The second group concentrated on independent living, including grocery shopping, reading expiration dates, choosing fresh fruits and

vegetables, and preparing meals from start to finish.

The results have been meaningful and immediate. Children who once hesitated to try new tasks are now serving meals, cleaning up after cooking, and taking pride in their responsibilities at home. One parent shared that their child now helps make breakfast before school and irons their own clothes, a small moment that represents a major step toward independence.



For families, the program offers reassurance and possibility. It creates space for children to practice skills they will rely on for years to come, while helping parents envision a future where their child feels capable and confident.

Sometimes the impact is best expressed in the words of the children themselves. One participant proudly shared, "This is my apartment." Another simply said, "I love cooking."

***Real Life Learning.  
Real Life Growth.***

At The Children's Center, behavioral health is about more than treatment. It is about equipping children with the tools to navigate daily life, build confidence, and take ownership of their future. Through the Real Life Learning Program, children are not just learning skills. They are discovering what they are capable of.

# Summer Moments, Lifelong Impact

Summer is a season of memories, family vacations, traveling, learning new skills, and the joy of camp. But for some children, those experiences are not guaranteed. That is why our Summer Camp is so special. We create moments that matter for kids who might not otherwise have them.

Our camp serves children who receive services at The Children's Center, many of whom have experienced trauma or live with developmental disabilities. Here, every child is welcomed, supported, and celebrated.

During their week at camp, children gain skills that last a lifetime. Through a partnership with Goldfish Swim School, they learn to swim, a life-saving skill for many experiencing it for the first time. They

enjoy a fishing trip, participate in creative projects, and form friendships that build confidence and connection.

This year, therapists were integrated into the camp experience, guiding social-emotional learning and helping children identify emotions, practice coping skills, and strengthen relationships. Comerica Bank also partnered with us to support financial literacy, reading with campers and teaching the

difference between debit and credit, wants versus needs, and the importance of saving money.

At camp, children do not just have fun. They leave with a set of life skills they carry into their homes, schools, and futures.

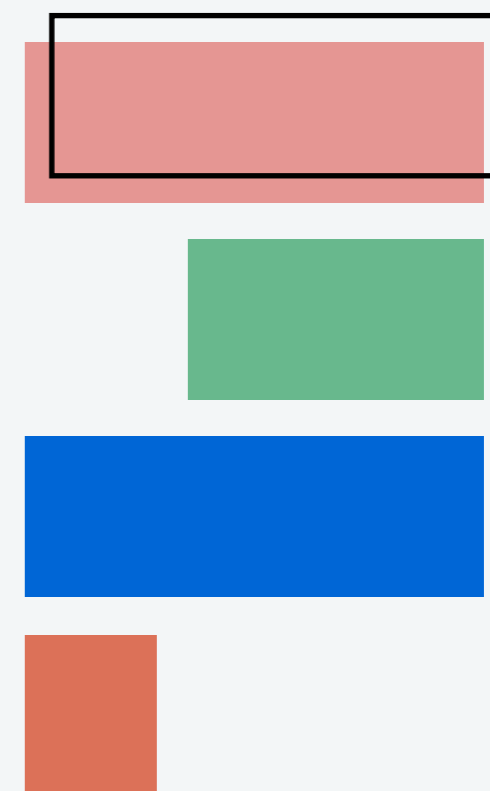
Our Summer Camp is free, with breakfast and lunch provided each day, an important support for families when school meals are not available. Nationally, the average cost for a one week camp is around \$350, making this opportunity especially meaningful for the families we serve.

Parents gain peace of mind and time to focus on their own responsibilities, knowing their children are safe, cared for, and thriving.

This is more than summer fun. It is an investment in confidence, safety, emotional health, and opportunity. For 38 children this summer, that investment created memories and skills that will last a lifetime.



*A summer camp  
where kids find joy,  
belonging, and the  
confidence to grow.*



# The Call That Changed Everything

Danny and Beth did not begin their foster care journey with all the answers. They began with something simpler: an awareness that children in their community needed safe, stable homes—and a belief that maybe they could be one of them.

Beth, a social worker, saw the need every day. She witnessed the instability many children faced and carried those stories home with her. Over time, those stories became impossible to ignore.

They had the space. They had the heart. And with the support of The Children’s Center, they had a path forward.

So they said yes.

At the time, they were raising their first child, just 11 months old, when they received a call about a baby in need. At first, they hesitated. But when they learned the child was struggling to settle in another home, something shifted.

They understood what it meant to care for a baby—the sleepless nights, the patience, the rhythm of care—and realized this was the moment they had prepared for.

They said yes.

That baby, Alden, would later become their son.

*“If we can give them even a moment of safety and love, that matters.”*

Today, Danny and Beth are raising four children, all under the age of ten, including Alden, who they adopted through foster care. Over the years, they have welcomed multiple children into their home—some for weeks, others for months. Each child arrives with a

different story, but the need is always the same: safety, consistency, and care.

They have watched children come in unsure and guarded, and slowly begin to open up. Sometimes, the growth is found in milestones—learning to swim, visiting the zoo, going camping for the first time. And sometimes, it is something even more powerful: a child beginning to feel safe.

Foster care has shaped not only the children who enter their home, but their entire family. Their four children are growing up learning what it means to share their space, to care for others, and to show up with compassion. It is not always easy. There are moments when it feels like too much, when the unknown feels heavy. And yet, they continue.

Because they believe everyone has something to give.

For more than a decade, Danny and Beth have partnered with The Children’s Center—and they are clear about one thing: they could not do this work alone.

“The Children’s Center allows us to focus on being the safe place,” they shared. “They handle the hard parts so we can focus on loving these kids.”



From licensing and thoughtful placement decisions to ongoing support, The Children’s Center walks alongside foster families every step of the way. The organization takes the time to understand each family, ensuring they are supported, not overwhelmed, and equipped to continue showing up for the children in their care.

That support makes a difference.

Because when foster families are supported, children experience greater stability, stronger connections, and the consistency they need to begin healing. It also creates space for families to work toward reunification—the ultimate goal—while knowing their child is safe.

“In a world that can feel out of control, this is something we can control,” they shared. “We can control how we love. How we show up. How we make a child feel safe.”

Through every placement, every goodbye, and every new beginning, that is what remains.

And through The Children’s Center’s foster care services—and the support that makes this work possible—more children are finding safety, more families are being strengthened, and more futures are being rewritten.

For Danny and Beth, it all started with a simple decision:

To say yes.



# For Children. For Families. Forever.

For nearly 100 years, The Children's Center has walked alongside children and families through hardship, healing, and hope. But the challenges they face, including trauma, poverty, and limited access to care, do not exist for a moment. They can shape a lifetime.

Meeting that need requires more than immediate support. It requires a long-term commitment to ensuring care is always within reach.

This year, The Children's Center took a powerful step toward that future.



Through the Michigan Central Station Children's Endowment Initiative, The Children's Center was selected as one of just eleven youth-serving organizations in metro Detroit to receive funding and a matching opportunity, an investment that reflects both the organization's impact and its vision for the future. The initiative, led by The Children's Foundation of Michigan and supported by community and civic leaders, recognizes organizations positioned to create lasting change for children.



*What we build today  
will shape what  
children experience  
tomorrow.*

With an initial \$500,000 already secured, every new dollar was matched up to \$500,000, building a \$1.5 million endowment designed to sustain and grow critical services for years to come.

This is more than a milestone. It is a foundation for lasting impact.

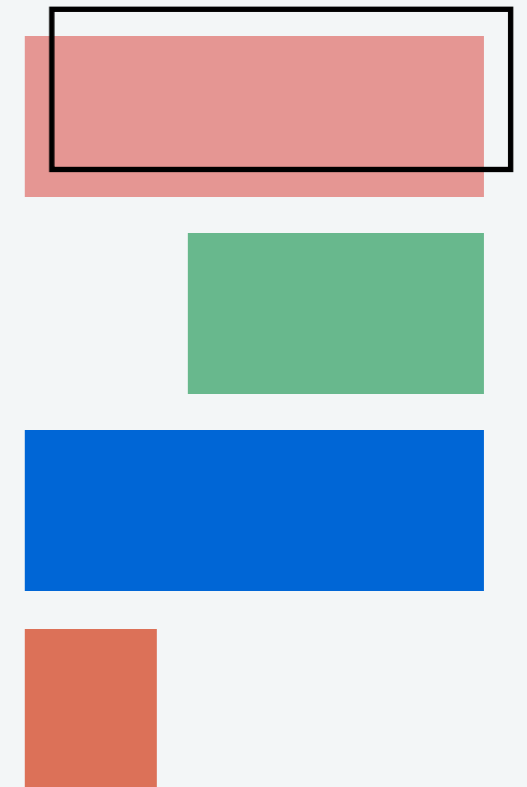
An endowment creates stability in an uncertain world. It expands access to care so more children can receive trauma-informed support. It strengthens innovation and ensures that programs continue to evolve alongside the needs of families.

Most importantly, it ensures that children will always have somewhere to turn.

Because when care is consistent, lives change. Children heal. Families grow stronger. Futures are rewritten.

This is more than an investment in today. It is a commitment to generations to come.

The work continues. And now, it is built to last.



# Every Number Tells a Story

Impact Statistics for Fiscal Year 2025



**80%** of The Children's Center clients are loyal enthusiasts who will keep referring others and fueling growth



**293**

families were successful in reaching the goals that they set



**100%**

high school graduation rate for youth in semi-independent living  
\*Without support, this drops to 50%



**52**

staff trained on equity, diversity, and inclusion



**67%**

of children rated as severely depressed last year moved out of the severely depressed category



**41%**

of children aged 7-17 that successfully completed treatment had no severe impairments reported after receiving services

**15,483**

children and families accessed essential items and attended community events



**33**

children were adopted and found their forever homes



**38**

children attended a 4-week summer camp

# The Hands and Hearts Behind the Mission

Community in Action: Our Volunteers

**939**

Unique Volunteers

## Volunteers have supported The Children's Center with:

- Regular activities to bring enrichment and support to TCC kids and families, such as: Boutique & Food Pantry Assistance, Readers & Creators, Dream Builders, Family Art Adventures, Game Nights, Lego Building, Coding Clubs, and Art Therapy
- Special program events that reach the community and client families, such as: Trunk or Treat, Back to School Bazaar, Backpack distribution, the Tau Beta Community Baby Shower, Turkey & Ham Giveaway, and the Holiday Shop
- Special events such as: AutoGlow and the Power of Possibilities Breakfast



**5,086** Total Hours

Dollar Value of  
**\$167,177**

# Investing in Every Story

## Statement of Activities | FY 2024-25

### Revenue

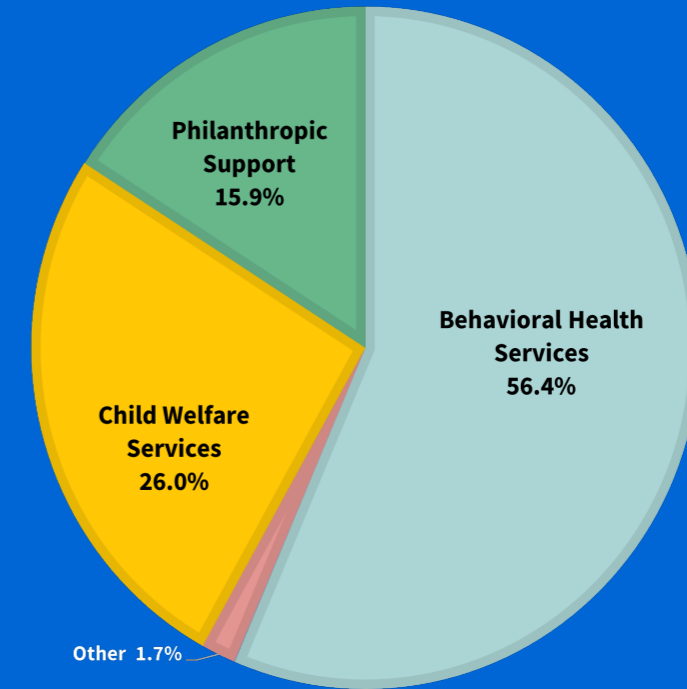
Behavioral Health Services	\$8,552,922
Child Welfare Services	\$3,949,537
Philanthropic Support	\$2,408,739
Other	\$262,289
<b>Total Revenue</b>	<b>\$15,173,487</b>

### Expenses

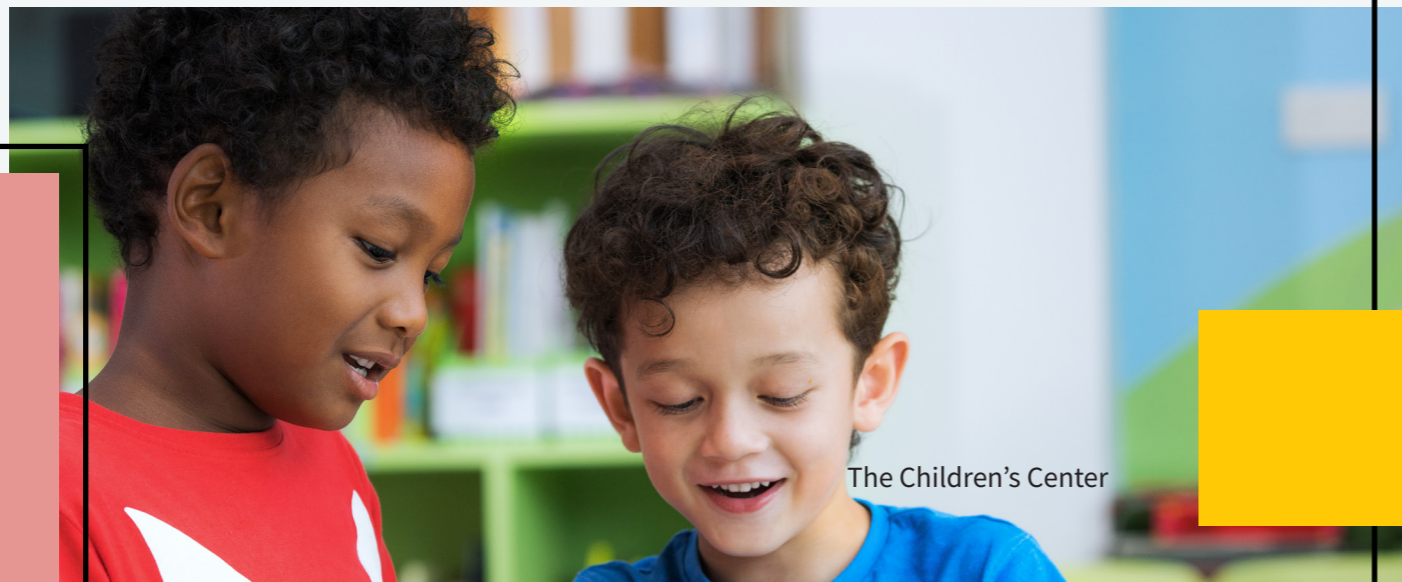
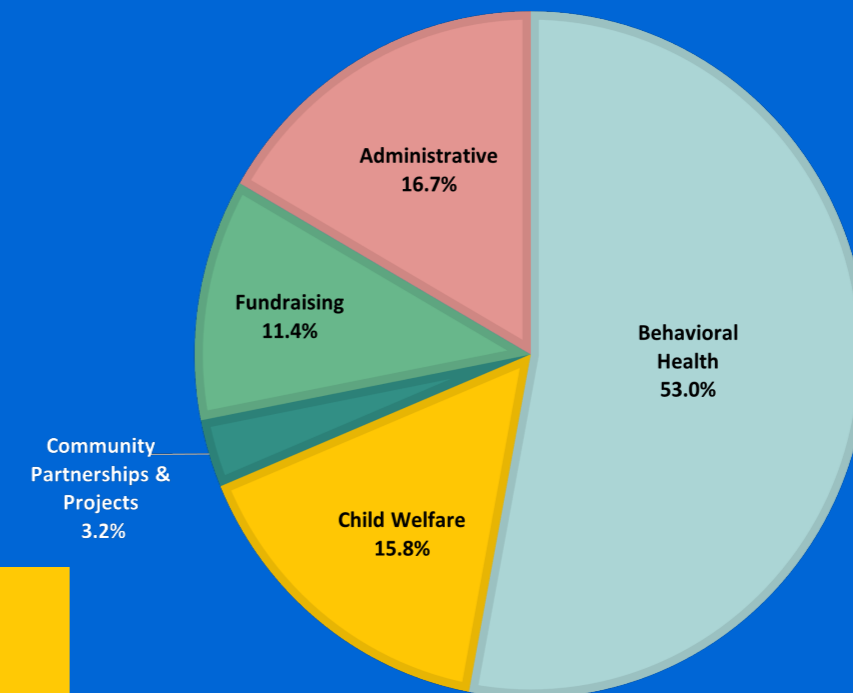
Behavioral Health	\$9,570,070
Child Welfare	\$2,848,575
Community Partnerships & Projects	\$571,538
Fundraising	\$2,052,933
Administrative	\$3,017,226
<b>Total Expenses</b>	<b>\$18,060,342</b>

Change in Net Assets from Operations	(\$2,886,855)
Non-Operating Income (Expenses)	\$453,278
<b>Total Change in Net Assets</b>	<b>(\$2,433,577)</b>

## Revenue



## Expenses



# The Story Builders: Thank You

## The Village of Giving

Helping children and families dream again takes an entire village. Our Village of Giving members make a five-year pledge of \$1,000 or more a year to help heal the city's most vulnerable children. It doesn't happen overnight, which is why our Village is so critical to our mission.

### ENSURING A SAFE HOME

#### \$50,000+

John & Denise Dunn  
Mr. and Mrs. William Clay Ford, Jr.  
Global Strategic Supply Solutions  
James & Denise Jacob  
Lisa Lunsford  
Erick & Lady Susan Reickert

Dr. Marquita Bedway  
Jared Bollaert  
Kimberly Bowden-Adair & Bryan Adair

Joan & Doug Budden  
Shawn & Linda Byrnes  
Crystal Coleman  
Kevin Cooper  
Robin D. Couzens

James Daly  
Lynda & John Dandridge  
Deborah & Richard DiGia  
LaTonya Dolton  
James & Mary Dunn  
John Ecclestone  
Michelle & Roy Edmonds

Camille Edwards  
Dennis & Si Edwards  
Nanci Ernst  
Natalia Fanning & Nathaniel Fanning

Doreen & Karl Fava  
Allyson Fiteny  
Denise Fleckenstein  
Francee Ford & Marshall Blau  
Julie Foust

Kathleen Frank  
Frank Gall  
Alan & Myndi Gallatin  
Marcia Gallegos & Timothy Sullivan  
John Garcia  
Wilhelmina & Paul Giblin  
Molly Gole  
Mark & Rebecca Gracey  
Stacey Gray

Robert Guiney  
Carlton Guthrie  
Donald Hall

Rainy & Rachelle Hamilton  
Chris & Michelle Harrison  
Kenton Higgins  
Richard Hyrb  
Desiree & Marvin Jennings  
Julia & Cleven Jones

Susan Joseph  
Chui & Teusi Karega  
Gevork Khachatryan  
Zachary & Rachel Kulish  
Jason & Kelli Lambiris  
Tiffany Leid

Joseph E. Mackey  
Sara Manteuffel  
William & Karen Marsh  
Mike & Diane Marston  
Beth & Peter Martz  
Debora & Danny Matthews

Anthony & Marcy Mikoy  
Richard & Kathie Miller  
Michelle Mio  
Joann Mitchell  
Monica Moons

Christian & Jennifer Moran  
Deborah L. Murphy  
Carlynn Nichols  
Martha Obringer  
Margaret & Daniel O'Connor  
Michelle Pace  
Lisa Perry  
Angela & Gerald Polk  
Adrienne Polumbo

Cindy & Richard Read  
Kimberly & Douglas Reich  
Denise Reske  
Phyllis & Dennis Reynolds  
Kirk A. Roy  
Barbara & Donald Runyon  
Christopher Ruth & Janet Chrzanowski  
David Sanchez & Meghan Martinez-Sanchez  
Tina Sappington  
Jill Schumacher & David Kramer  
Cheryl A. Simon

Simone Smith  
Vinti Sondhi  
Kristin & Mark Sowle  
Michael & Amy Spath  
Michael Steinback & Sharon Madison Steinback  
Nancy Stermer & Paul Hoyte  
Melissa Stewart  
Carmen & David Szurpicki  
Ann Teschendorf  
Renee & Matthew Theunick  
Kristin & Paul Tyll  
Bridgette & Cameron Valade

Linda Valka  
Brendan & Kelly Walsh  
Tonya Wells  
Jean M. Wersching  
Philip White  
Richard & Kristin Whitney  
Henry & Heidi Wineman  
Bruce & Janet Wyman  
Lorna Zalenski  
Tammy L. Zonker

## Believers

Believers are a community of life-changers who commit to a recurring monthly gift of any amount to help children overcome unimaginable challenges and grow into strong, healthy, productive adults.

### FOUNDING MEMBERS

Shelia Donaldson  
Christine V. & Gordon T. Ford, Jr.

Susan & William Gilbride  
Mathew Godlewski  
Balen Golida

Navneet & Gurinderjit Grewal  
Patrece Hamblin

Happy Kids  
Raschelle Harris  
Dan Harrison  
Vivian Henry  
Janice G. Hill

Pieter Hogeveen  
Glenn Hunter  
Caitlin Huyghe  
Therese Iglesias

Mary Jo Johnson  
Ronald Kar  
Cara Kennedy  
Erin Krueger  
Brian Lam

Shannon Lapsley  
Carl Lawrence  
Erica Lewis  
Marjorie Lynn  
Susan & Rob Mason

Isabel Measzros  
Erin Miller  
Dr. Robyn D. Moore  
Christopher Naidoo  
Naomi Books, LLC

Fred Nazarko  
Mary Anne O'Sullivan-Reising  
Tisha & Matthew O'Malley

Mouhamad & Mounira Ozoor  
Laura & Matthew Parvin

Janet Pasco  
Christine Payson  
Megan & Mike Phelps  
Linnette Phillips  
Frank Pino, III

Pattie Potts  
Phyllis & Dennis Reynolds  
Melissa Rich  
Alicia Schwartz  
Christa Shaw

Brent Smith  
William Smith  
Paul Talbot  
Robyn Thomas  
Tracy Thomas

Ramona Thornton  
Justin Van Wyk  
Donna & Bob Waller  
Monique Walthall  
Paul Whalen

Amy Whipple  
Terrel White  
Kenyada Wilson  
Jamie Wolfe

# Believers Continued

## THE CHILDREN'S CENTER TEAM

Shereen Allen-Youngblood  
 Melanie Banks  
 Brian Bomar  
 Carron Boyer  
 Asura Burke  
 Wanda Burke  
 Angel Clark  
 Cynthia Currell  
 Melissa Davis  
 Andrea DeShields-Thomas  
 Richard Dusky  
 Rachel Eaton  
 Aubrey Gilliland  
 Tremel Green

Earl Hairston  
 Alyssa Hart  
 Ayana Jackson  
 Carin Jones  
 Lee & Donna Koss  
 Richard Kryszko  
 Rachel Lobb  
 Jasmine Logan  
 Lyndon Mabande, Jr.  
 Sandra Mannan  
 Beth & Peter Martz  
 Kevin McAlpine & Fred Huebener  
 Cherelle & Blake McGhee  
 Jalona Moore

Omega Mostyn  
 Deborah A. & Michael Murphy  
 Dina Novelli  
 Anita Pace  
 Patricia A. Phillips  
 LaTonya Pondexter  
 Tiffany Rambus  
 Tenae Rankin  
 Emily Rucker  
 Robyn Smith  
 Matthew Sommerville  
 LaJuan S. Taylor  
 Mychele A. Tennille  
 Carol Wade  
 Pamela Willis

Joni Davis  
 Detroit Chassis LLC  
 Detroit Industrial School  
 Foundation  
 Detroit Kiwanis No. 1 Club  
 Detroit Manufacturing Systems  
 Kelli Dobner  
 Eagles for Children, Inc.  
 Tracey & Spencer Ellis  
 The Elmira L. Rhein Family  
 Foundation  
 Andrea Evers  
 Nathaniel Fanning  
 FOX Corporation  
 Frenchie Foundation  
 Donald Garda  
 Raechele Gathers  
 Gentherm  
 Ashley Greene  
 The Grosse Pointe Memorial  
 Church  
 Dr. Anish Gupta, D.D.S.  
 Michael Guthrie  
 Sydney & Dennis Harless  
 Apprille Harris  
 Kevin Hartig  
 Henniges Automotive  
 Horizon Bank  
 Marilyn Horn  
 Huntington Bank  
 James Hurst  
 Innovative Ear and Hearing Inc.  
 Inteplast Group  
 The Jacob Best Foundation  
 Sharad & Elizabeth Jain  
 Joanne and John Carter Family  
 Foundation  
 Eric & Patricia Karsten  
 KeyBank  
 The Kresge Foundation  
 Kronlund Foundation Charitable  
 Trust  
 Ewa Leahy  
 Jim Forster & Joan LeMahieu  
 Liggett Family Charitable  
 Annuity Trust  
 Victoria Liggett  
 Lithia Motors  
 Luke Litwinowicz & Anne Dennis  
 Lyon Dental Implants and Oral  
 Surgery  
 The Lyons Family Fund  
 Sonita Martin  
 Meghan Martinez-Sanchez &  
 David Sanchez  
 Barbara McAllister

Sharon McIntosh  
 Patrick & Carolyn McNamara  
 Metropolitan United Methodist  
 Women  
 Marcy & Anthony Mikoy  
 Mitsubishi Electric Automotive  
 America, Inc.  
 Tim & Ruth Monteith  
 Deborah A. & Michael Murphy  
 Operating Engineers 324  
 Glenn Parvin  
 Joe Porco  
 Analiisa Racette  
 Rariden Schumacher Mio  
 RDM Associates  
 Renaissance Charitable  
 Foundation  
 Dr. Verna B. Robinson & Mr.  
 Gregory Robinson  
 Rocket Mortgage  
 Rossetti  
 Matthew Rossetti  
 Donna Schultz  
 Sgt. Lee Smith Legacy Fund  
 Patricia & Daniel Sharkey  
 The Shyft Group  
 Nicole Smith  
 Matthew Stanford  
 Jason Stesney  
 Jennifer W. Stoll  
 Carly Strachan  
 Mrs. Marcia Gallegos & Mr.  
 Timothy Sullivan  
 Synergies Family Foundation  
 Helena Taggart  
 The Block Foundation  
 Matthew & Renee Theunick  
 Thomas and Carol Cracchiolo  
 Foundation  
 Utility Reduction Analysts, Inc.  
 Joseph & Diane Walsh  
 Lori Washington  
 John Weller  
 Wells Fargo Bank  
 Clare Willett  
 Denis Wills  
 Kerry Yates  
 Susan Young

**FRIENDS**  
**\$1.00+**  
 98Forward  
 Diana Abbott  
 Kay Agney & Bob Lucas  
 Shivani Agrawal  
 Waheed Alashe

Alpha Kappa Alpha Sorority  
 Incorporated  
 Altruist  
 Ashley Ambati  
 The Honorable and Mrs. Charles  
 W. Anderson, III  
 Jeffrey Angell  
 Elyce Arcieri  
 Michael Armiak  
 Jason & Sacha Armstrong  
 Krystal Armstrong  
 Yolanda Arnold  
 AT&T  
 Douglas & Suzanne Atkinson  
 Paul Bailey  
 Julie Anne Baker  
 Sharon Baker  
 Douglas & Kate Bandol  
 Bank of America  
 Tom Banks  
 Chad Baslock  
 Brandon Baswell  
 Brenda Baxter  
 Maria & James Beauvais  
 Mary Bernatz  
 Heather Betts  
 Laura Beyer  
 Veronica Bielat  
 Stephen & Diane Bollas  
 Thomas Bond  
 Terry Book  
 Danny Bookout  
 Stephen Bowe  
 Laurie Bradychok  
 Regina Branch  
 Monica Brand  
 Brightsource Lighting Solutions  
 LLC  
 Justin Brooks  
 Capri Brouckaert  
 Avis Broussard  
 Derschaun Brown  
 Stephanie Brown  
 Dr. Suzanne Brown  
 Jamie Bruyere  
 Tom & Jennifer Buda  
 Buddy's Holdings Co, LLC  
 Frank Buscher  
 Daniel Buszka  
 Rachael Butler  
 Carmen Cadwell  
 Ann M. Campbell  
 Jacqueline Campbell  
 Kimberly Capizzani  
 Tommy Cataldo  
 Steven Catalo

## Annual Donor Listing

### BENEFACTORS

#### \$50,000+

AmeriHealth Caritas Foundation  
 BASF Corporation  
 The Children's Foundation  
 Community Foundation for  
 Southeast Michigan  
 Detroit Auto Dealers Association  
 The Ethel and James Flinn  
 Foundation  
 Ford Philanthropy  
 Jackson Dawson  
 Communications  
 Jamie and Denise Jacob Family  
 Foundation  
 Paul W Smith Golf Classic  
 Tau Beta Association  
 The Elizabeth, Allan and Warren  
 Shelden Fund  
 The Julius and Cynthia Huebner  
 Foundation

### ADVOCATES

#### \$25,000+

William & Lisa Ford Foundation  
 The Matilda R. Wilson Fund  
 The Pulte Family Charitable  
 Foundation  
 WPP

### FOUNDERS

#### \$10,000+

AAA - The Auto Club Group  
 Robert & Catherine Anthony  
 Axalta  
 Barton Malow Company  
 Barton Malow Foundation  
 Bodman PLC  
 Comerica Charitable Foundation  
 EW Grobbel  
 Elena A. Ford & Mitch Seldin  
 Henry Ford Health  
 Hollingsworth Logistics Group,  
 LLC  
 Ignite A Better World Foundation  
 Imagination  
 Jennifer & Christian Moran  
 Ann & James Nicholson  
 Oakley Industries  
 Michael & Donna Oakley  
 OneMagnify  
 Rehmann Foundation  
 Rite Aid Healthy Futures  
 United Way for Southeastern  
 Michigan  
 Walbridge Aldinger LLC

### SUPPORTERS

#### \$1,000+

Paul Abdelnour  
 Albert & Doris Pitt Foundation

Ally Financial Inc.  
 Anschutz Family Foundation  
 Applied Materials  
 The Honorable Jack Martin & Dr.  
 Bettye Arrington  
 Arts, Beats & Eats Foundation  
 Michael Asmussen  
 Ashlynn Basile  
 Amy Beaudry & Steven Helton  
 Benson & Edith Ford Fund  
 Bryan & Karen Best  
 Marshall Blau & Francee Ford  
 Blue Cross Blue Shield of  
 Michigan  
 The Boldt Company  
 Bright Horizons  
 Robert Bullen  
 Terry Campbell  
 Gerald Caratelli  
 Carole & Doug Maibach Family  
 Foundation  
 Joanne and John Carter  
 Cass and Ferry  
 Kelly Chimento  
 Christ the Redeemer Parish  
 Citadel of Praise  
 Citizens United Reciprocal  
 Exchange  
 Kevin Coleman  
 Connect Detroit  
 Consumers Energy Foundation  
 Hank Couzens

# Annual Donor Listing

Margarita Chappell  
Amy Chesterton  
Lee Childers  
Carly Chulock  
Clifford Cicotte  
Scott Cieslak  
Ami Cipolla  
Jeff & Laura Clark  
Sherilyn Clark  
Jeremy Collins  
Ashley Conaway  
Sheila Connolly  
Amanda Coon  
Michael & Marcia Cooney  
Core Values Construction  
Cathy Cornell  
Mark Cory  
Rosemary Cotter  
Adam Counts  
Keona Cowan  
Cynthia Cprek  
Amy Crandall  
Aron Csont  
Rebecca Cunningham  
William Currence  
Ray Cushman  
CyberGrants SPV  
Gail & Stephen Czarnik  
Tim Dacey  
Hamsa Daher  
Daimler Truck North America  
Valeria de Jongh  
Peter De Steiger  
Adam Dee  
Dell, Inc  
Matthew Demmer  
Matt Dery  
Deval Desai  
Linda & Thomas Dick  
DigitasLBI  
Division Edition Inc.  
Wilma D. Dixon  
Garrett Donato  
Valerie Downs  
Takeita Drake  
DTE Energy Foundation  
DTE Energy  
Jerome Dubrulle  
Alexa Dudash  
Maria Duey  
Bernadette Durkin  
Jay & Linda Eastman

John & Linda Edmonson  
Eric & Mary Emmons  
Ivana Enright  
Ted & Traci Ens  
Maurice Evans  
Ashley Fahey  
Yarob Fakhoury  
Nyree Faulkner  
Fred Fechheimer  
William Feldmaier  
Marla Feldman  
Rick Fellen  
Fieger Law  
Norma Fields  
Dan Finkiewicz & Virginia Carey  
Jason Fisher  
Tonya Fleming-Fuller  
Alexandra Ford English  
Nicholas Ford  
Rob Ford  
Brianna Foster  
Gloria J. Franks  
Margaret Freundl  
Victor & Sylvia Fryling  
GACO Sourcing  
Ruth Garcia  
GE Aerospace  
GE Foundation  
General Electric  
Paige Genslak  
Nicole George & Christopher  
Thomas  
Carol Gillis  
Sawyer Gipson-Long  
Chontelle Glenn  
Raggeria Goddard  
Renee & Brian Godfrey  
Sarah Goodrich  
Google, Inc.  
Dr. Krystal Gordon  
Kim Gorman  
Stephen Grady  
Benjamin Graham  
Tresa Grauer  
Ann Green  
Jill Greimel  
Gresham Smith  
Gurinderjit & Navneet Grewal  
Elizabeth & Thomas Griffith  
Grosse Ile Presbyterian Church  
Iris & Frederick Gruhl  
David & Laura Gutierrez

Joseph Haddad  
Rhonda Hall  
Ronald Hall, Sr.  
Jacqueline Hall-Keith  
Craig Halseth  
James & Cleo Hamilton  
Monica Hampton  
Darcy Hansard  
Ronald Harbour  
Lenora Hardy-Foster  
Dustin Harris  
Katherine Harris  
Emily Harrison  
Cheryl Harvey  
Della Hawkins  
Joyce Hayek  
Paul Healy  
Cleo Hedgepeth  
Julie Hein  
Helping Environment and Aiding  
Lives (HEAL)  
John Henry  
Shontae Hightower  
Christina Hill Johnstone  
Carmen Hill  
Erin Hinch  
Ann Marie Hines  
Jordan Hodges  
Madeline Holloway  
Patricia & Kenneth Hollowell  
Judith Holtz  
Jessica Hornsby  
Carole Hosey  
Timothy Howlett  
Alan Huddy  
Jean Hudson  
Clarissa Hulleza  
James & Diane Hults  
Marshall J. Hunt, Jr.  
Scott & Margaret Hunter  
Mar'Kayla Jackie  
Chris Jackson  
Monica Jackson  
Shayla Jackson  
Tracy Jackson  
Joshua Jarvie  
Dr. Charmaine Johnson  
Frances & Derrick Johnson  
Jean & Ollie Johnson  
Stacey Johnson  
Ven Johnson  
Joyce Johnson-Maples

Rhoda Jones  
Max Kaczynski  
Senthil Kumar Kaliraj  
Susan Kalkstein  
Jackie Kalogerakos  
Alissa Karbel  
Robert & Hazel Karbel  
Tracy Karbel  
David Keamy  
George & Cecilia Keith  
Gilda B. Keith  
Scott Kelly  
Connie & Pat Kendall  
Susan & Guy Kenny  
Evan Kerstein  
Shelley Ketcham-Bates &  
Michael Bates  
Peter King  
Jennifer & Matthew Kipper  
Deborah Kirkland  
Douglas & Marcell Klett  
Chad Koglin  
Mark Koszyk  
Tina Kozak  
Cara & David Kozik  
Noah Kozlowski  
KPMG Community Giving  
Steve & Nately Krajnik  
Meghan Kruslemsky  
Diana Ku  
Raymond Kubo  
Andrew LaGrega  
Leanora LaGrega  
Sidney Lambrix  
Michael Laske  
Teresa LeFevre  
Raymond & Monica Lemanski  
Nita Lenhard  
Judy Lewis  
Eileen Leyhane  
Liberty Mutual Group  
Catherine Liesman, PhD  
Kathy & Patrick Lindsey  
Francesca Litow  
Vanessa Llanas  
Constance Logan  
Matt Loria  
Luke & Olivia LoVasco  
Gary Love  
John Lucas  
Jo A. Lundy  
Benjamin & Shannon Luppino  
Anne & John Mabley  
Abbey MacGregor  
Kathy Makino  
Nelson Maldonado

Andrew Mannion  
Katie Marciniak  
Sandra Marion  
Gail & Peter Marutiak  
Rob & Susan Mason  
Steven & Stephanie Master  
Judith & Charles Mathews  
Pearlie Matthews  
Mary & Edward Maurer  
Mays Printing  
Felecia McDaniel  
Charlene McDougale  
Janni McLean  
Gioconda & James McMillan  
Sherry McRill  
Cheryl Meadows  
Rebecca Merriman  
Meta  
Lillian & Theodore Metry  
Mexicantown Bakery  
Michal Mikrut  
Eric Miller  
Rex & Joan Miller  
Edward & Anne Milligan  
Sam & Becky Misuraca  
Barbara Mitchell  
Denise E. Moczydlowsky  
Casey Mok  
Therron Montgomery  
Robert A. Moore  
Bernard Morgan, II  
Al Morris  
MRPR Group PC - CPAs and  
Advisors  
Amanda Muckenthaler  
Tracy Myrick  
Fatimah Nahhas-Alwan & Kamal  
Alwan  
Vickie Najera  
Cynthia Nappo  
Rema Nasif  
Gloria Nastas  
David Nathan  
Neneh Njie  
Kathy & Michael Northcutt  
Matthew O'Bryan  
Harrison O'Gorman  
Benson Onyegbula  
Optomi  
Scott Orhan  
Catherine Pace  
Rachel Packard  
Richard & Maureen Page  
Rachelle Park  
Erin Parker  
Roberta Patt

Vincent P. Pavlak  
PayPal Giving Fund  
Renee Peace  
Ollivette Pearson  
Jerome Peoples  
Sandra Peppers  
Juliana Perry  
Alaina Peters  
Staci Peterson  
Pie Sci  
Sheryl Pimlott Kubiak  
Ryan Pisani  
John Pollock & Dana Alpern  
Alyssa Pozniak  
Michael Pricer  
Joe Provenzano  
Judy Quakenbush  
Khairunnisa Quraishi  
Gordana Radisic  
Gregory A. Randall  
Rebecca Rank & Stephen Perry  
Udhay Ratnasamy  
Sharon & Jack Ray  
Pauline Raymond  
Scott Rea  
Susan Reck  
Ronald Reed  
Lan-Huong Reilly  
Deana Reynolds  
Sean Rhaesa  
Benjamin Ridderbos  
Thiany Riddihough  
Robert & Jacquelin Riley  
Gary Ringer  
Barbara & Gerald Rivait  
Joanne Rivera  
Jade & Gary Robb  
David Robinson  
Kevin B. Robinson  
Lee Robinson  
Noah Robinson  
Douglas & Lynne Roby  
Kirsten & Anthony Roby  
Shayna Rodriguez  
Jacqueline Roehl  
James Roll & Ruth Bardenstein  
Anthony Rosenblum  
Cheo Rowzee  
Karen Rowzee  
Nicole & Adam Ruetz  
Nicole Runyon  
Timothy & Kim Ruokolainen  
Joanne Mary Ruzza  
Markeith Saddler, Sr.  
Tarick Salmaci  
Denzil Samuels

# Annual Donor Listing

John Sattler  
 Jim Saucedo  
 Michael & Shelly Schefka  
 Ronald Scholtes  
 Charles Schultz  
 Patrick Schwierking  
 Fredric Scott  
 Laura Scott  
 Monica & Peter Serran  
 William Sexton  
 Brian & Amber Sharrow  
 Gregory Shea  
 Dr. LaTonya Shelton  
 Mackenzie Shenk  
 Peggy & Bob Shireman  
 Kristian Shore  
 Dennis Simmons  
 Carolyn Sklut  
 Michael Sleva  
 Yolanda Smith Charles  
 Tad Smith  
 Janet Reynolds Snyder  
 Joanne Sobeck, PhD  
 Sherry Soenen  
 Michael Solomon  
 Amy Somerset  
 Cynthia Spencer  
 Ann & James Spica  
 Spinzo Corporation  
 Maureen Stapleton  
 State of Michigan Department of  
 Labor & Economic Opportunity

Jennifer & Brad Stermer  
 Rebecca Stermer  
 Joseph F. Stevens  
 Frank & Diane Surma  
 Walter Sutherlin  
 Danni Tachoir  
 Ira Talbott  
 Andrea Taylor  
 Vatche Tazian  
 Nicole Tennant  
 The Elite Group  
 Kyra Thomas  
 Sara & Rick Thomas  
 Yolanda Thomas  
 T-Mobile  
 Mark Tolkaacz  
 Adrianna Touma  
 Jim Trouba  
 Jerry Tsatsos  
 Steven & Stacey Tuohy  
 Tierra Turner  
 Mylie Umphrey  
 Nicholas Van Damme  
 Gerald & Teresa Varani  
 Carl Vaughn  
 Elizabeth & Clifford Vaz  
 Dr. Sanjeev Venkataraman  
 Linda Vitale  
 Jeniece Waite  
 Laraine & George Walowich  
 John & Lorraine Wangler  
 Carol Warehall

Craig Wasen  
 Jaime Waterfield  
 Ray Waters  
 Debra Watkins  
 Scott Wawrzyniak  
 Wayne State University  
 Beverly Weathington  
 Jim & Diana Weyand  
 Claudia Wieditz  
 Mary Grace Wilbert  
 Steve & Terri Wild  
 Jenise Williams  
 Oletha D. Williams  
 Steven Williamson  
 Stephanie Wineman  
 Sanjaka Wirasingha  
 Carly Wiseman  
 Michael Wolfe  
 Larry Woo  
 Michelle Wooddell  
 Monique Woods  
 Sarah Wozniak  
 Xuan Wu  
 Lisa & Phillip Wurster  
 Amanda Wylonis  
 Elizabeth Zatina & Michael  
 McDevitt  
 Joe Zayance  
 Jeffrey Zeleji  
 Dennie Jo Zink

**IN HONOR OF ROBERT AND  
 HAZEL KARBEL**  
 from Tracy Karbel  
 Alissa Karbel

**IN HONOR OF SUE SHOHA**  
 from Robert & Hazel Karbel

**IN MEMORY  
 IN MEMORY OF DREW  
 HARRISON**  
 from Michelle & Chris Harrison

**IN MEMORY OF BETTY JANE  
 PINEAU GOODRICH**  
 from Connie & Pat Kendall  
 Peggy & Bob Shireman  
 Danny Bookout

**IN MEMORY OF ELIZABETH  
 ARMIK**  
 from Michael Armiak

**IN MEMORY OF ELMIRA RHEIN**  
 from The Elmira L. Rhein Family  
 Foundation

**IN HONOR OF FRANK COUZENS  
 JR., FRANK COUZENS III, AND  
 MIKE CRANDALL**  
 from Anschutz Family  
 Foundation

**IN MEMORY OF KATHERINE H.  
 SHANER**  
 from Mary Bernatz

**IN MEMORY OF MYRA L. WILLIS**  
 from Dr. Angila Beard

**IN MEMORY OF RAYMOND  
 POWERS**  
 from Andrew LaGrega  
 Leanora LaGrega  
 Douglas & Marcell Klett  
 Raymond Kubo  
 David Keamy  
 Mark Tolkaacz  
 Ami Cipolla  
 Victor & Sylvia Fryling  
 Ronald Reed  
 Valerie Downs  
 Stephen & Diane Bollas

**IN MEMORY OF DR. ROBERT  
 ZINK**  
 from Julie Foust

## James Couzens Legacy Society

Just as our founder James Couzens left a legacy of making a difference for generations of Detroit children and families in need, the individuals recognized below have included The Children's Center in their legacy plans through a bequest or life insurance policy. Some things do last forever.

Raymond & Karen Caloia  
 Michael Craig & Alison Couzens  
 Craig  
 Allan Dunlap  
 John & Denise Dunn  
 Denise Fleckenstein  
 Christine V. & Gordon T. Ford, Jr.  
 Daniel & Patricia Frank  
 R. M. Freedman  
 Angela Hardison

Margaret J. Hawthorne  
 Mitchell Ray Hollis  
 Shakyla Nichole Hollis  
 Jennie V. Kerr Trust  
 Monica Johnson  
 Allan B. Levy  
 Marilyn & Gregory Magreta  
 Mr. Ben C. Maibach, Jr.  
 William & Karen Marsh  
 Tracy Marzett

Debora & Danny Matthews  
 Christian & Jennifer Moran  
 Margaret & Daniel O'Connor  
 Paige & Brian Peabody  
 Renee Prewitt  
 David & Lyn Reich  
 Estate of Ruth R. Rothschild  
 Jill Schumacher & David Kramer  
 Nancy Stermer & Paul Hoyte

### HONOR & MEMORIAL TRIBUTE DONATIONS

**IN HONOR  
 IN HONOR OF GRANDMOTHER  
 JESSIE A. LEWIS**  
 from Apprille Harris

**IN CELEBRATION OF DEBORA  
 MATTHEWS**  
 from Denise Fleckenstein  
 Renee Prewitt

**IN CELEBRATION OF NORA  
 BRANDT**  
 from Chontelle Glenn

**IN HONOR OF TINA AND  
 GORDON FORD**  
 from Linda Valka

**IN HONOR OF CINDY  
 GLENNIE'S RETIREMENT**  
 from Sherry Soenen

**IN CELEBRATION OF DAVID  
 AND LYN REICH'S WEDDING**  
 from Teresa LeFevre  
 David & Cara Kozik

**IN HONOR OF DIANA WEYAND**  
 from Jim & Diana Weyand

**IN HONOR OF ANDREW'S  
 GRANDFATHER**  
 from Shivani Agrawal

**IN HONOR OF LISA FORD**  
 from Jim Forster & Joan  
 LeMahieu

**IN HONOR OF MEGHAN  
 SHARKEY**  
 from Patricia & Daniel Sharkey

**IN HONOR OF PHILIP AND  
 MELISSA HILTNER**  
 from Lisa & Phillip Wurster

## Our Board 2024-25

### BOARD OFFICERS

Dennis Edwards, Board Chair  
 Elizabeth Agius, Immediate Past Chair  
 Chui Karega, Esq., Legal Counsel  
 Tina V. Ford, Secretary  
 Michelle Pace, Treasurer  
 Michael Craig  
 Anthony DiPonio  
 Lisa Lunsford  
 David R. Reich  
 Nancy Stermer  
 Renee Theunick  
 Glen Flowers  
 Jason A. Lambiris

### BOARD OF DIRECTORS

Marianna Bailey  
 John Dunn  
 Wihelmina J. Giblin  
 Stacey Gray  
 Arlyssa Heard  
 Kenton Higgins  
 Regina Jemison  
 Rhoda Jones  
 David Nathan  
 Deniqua Robinson  
 Christopher Ruth  
 Jill Schumacher  
 Simone Smith  
 Dolores Sturdivant



The Children's Center  
79 W Alexandrine  
Detroit, MI 48201

(313) 831-5535  
[TheChildrensCenter.com](http://TheChildrensCenter.com)

