

HELPING CHILDREN DREAM AGAIN

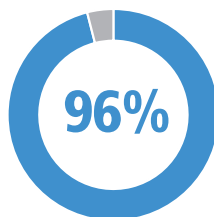
THE CHILDREN'S CENTER: IMPACT WE MADE DURING FY 2020-2021

OUR WINS



319 Families Achieved their Written Goals*

*Reaching the goals that they set



Of Children that Successfully Completed Treatment had No Severe Impairments Reported after Receiving Services



48 Children Found a Forever Home



75% of Children in Crisis were Diverted from a Psychiatric Hospital

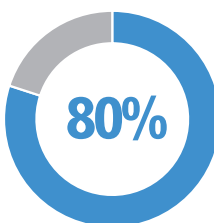
WHEN ASKED: Based on your experience at The Children's Center, how likely are you to recommend TCC to someone who needs our services?



94% High School Graduation Rate for Youth in Semi-Independent Living



17 Staff Trained on Behavioral Health Equity



"Are loyal enthusiasts who will keep buying and refer others, fueling growth."



3,093 Unique Clients Received a Behavioral Health Service from TCC

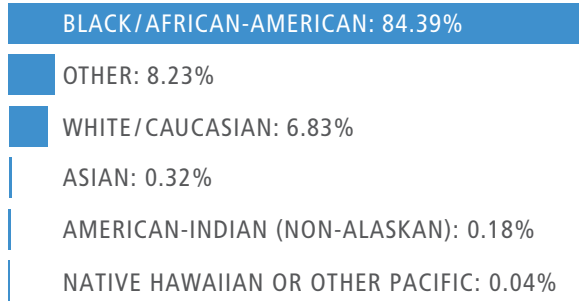




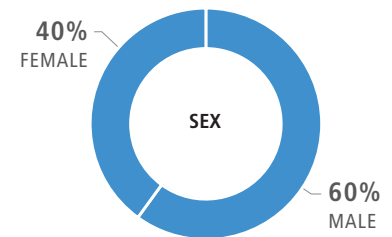
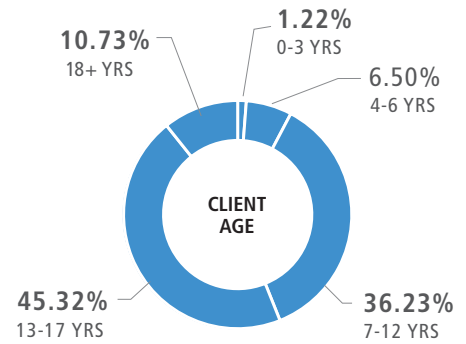
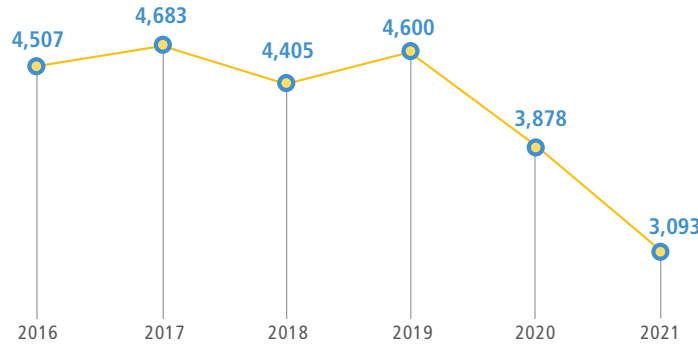
HELPING CHILDREN DREAM AGAIN

CHILDREN & FAMILIES SERVED FY 2020-2021

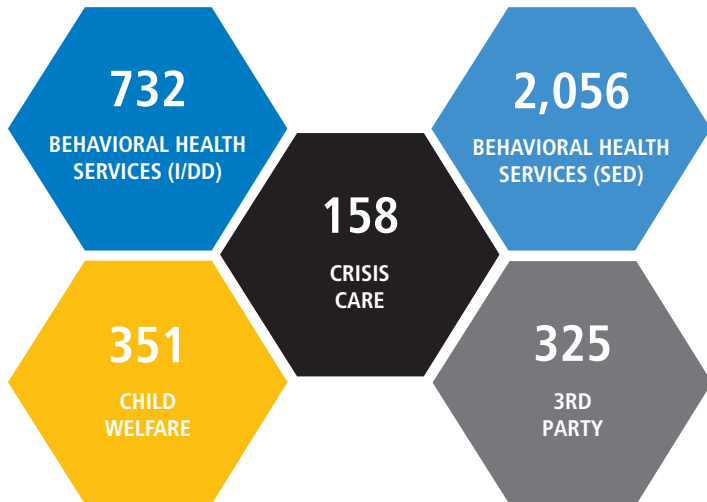
RACE/ETHNICITY



CLIENT COUNT-BEHAVIORAL HEALTH – I/DD & SED (UNDUPLICATED)



FY 2020-2021 CLIENTS SERVED BY PROGRAM



- BEHAVIORAL HEALTH SERVICES (I/DD)** | INTELLECTUAL/DEVELOPMENTAL DISABILITIES SERVICES, HOME BASED SERVICES, SUPPORTS COORDINATION, AUTISM
- BEHAVIORAL HEALTH SERVICES (SED)** | BHS SED – GENERAL BEHAVIORAL HEALTH, EARLY CHILDHOOD, HOME BASED SERVICES, HOSPITAL LIAISON, SCHOOL BASED SERVICES, WRAPAROUND
- CRISIS CARE** | CRISIS CARE SERVICES
- CHILD WELFARE** | FOSTER CARE, ADOPTIONS, YOUNG ADULT SELF-SUFFICIENCY (YASS)
- 3RD PARTY** | BEHAVIORAL HEALTH SERVICES COVERED BY A NON-CMH (COMMUNITY MENTAL HEALTH) INSURANCE CARRIER AS A PRIMARY INSURER

