



CRISIS TO CONNECTION:  
**AN IMPERATIVE FOR  
OUR BLACK BOYS**

[THECHILDRENSCENTER.COM/CRISISTOCONNECTION](https://thechildrenscenter.com/crisistoconnection)

# Common Language

## Trauma Defined:

An event, series of events, or set of circumstances **experienced** by an individual as physically or emotionally harmful or life-threatening with **lasting adverse effects on the individual's functioning** and mental, physical, social, emotional, or spiritual well-being.

## Crisis Defined:

A **time of intense difficulty, trouble or danger**. The **turning point** of a disease **when an important change takes place**, indicating either **recovery or death**.

# Crisis to Connection Imperative

At The Children's Center, we believe that every child deserves to dream and become the amazing person they were born to be.

But for far too many Greater Detroit children, their life's possibility is eclipsed by the color of their skin, their gender identity and the zip code they were born into. Many Detroit children are in crisis.

“*It's easier to build strong children than to repair broken men.*”

– Frederick Douglass

# Key Findings

- Our most frequent clients are Black boys between the ages of 7-12
- Primary diagnosis of Attention Deficit Hyperactivity Disorder, followed by Oppositional Defiance Disorder.
- The majority of TCC clients have experienced some form of adverse childhood experiences or trauma that is not being formally addressed in service delivery. This is also true nationally.
- At the same time, we've observed little improvement in life outcomes for Black men.

# The Current Situation

- Detroit is re-emerging as a city of opportunity, unless you are a Black boy.
- **Our Black boys in Detroit are in crisis.** Their life trajectories are crippled by intergenerational trauma caused by implicit bias and systemic racism.
- **Black boys** are disproportionately affected by implicit bias, systemic racism, and a lack of trauma-informed community support systems. They experience trauma at a much higher rate than their white counterparts.

# The Current Situation

**This disparity creates unimaginable challenges and keeps them from living their dreams and becoming the amazing people they were born to be.**

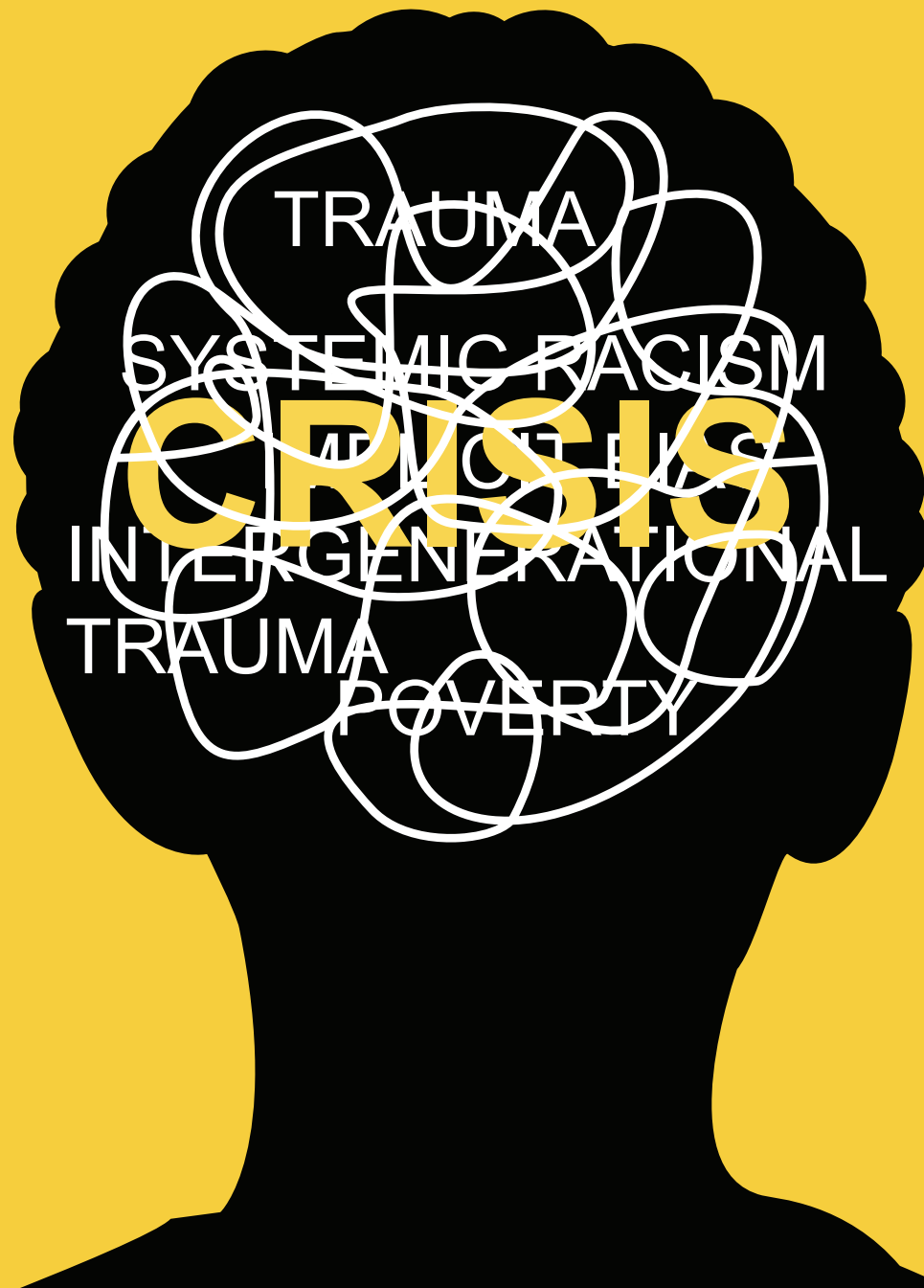
**Compared to all other males, Black boys are:**

- 1.5 times more likely to receive an in school suspension
- 2.4 times more likely to receive an out of school suspension
- 1.7 times more likely to receive an expulsion
- Have a graduation rate of only 68% compared to 80% for white males
  - (Statistics indicate that 60% percent of high school dropouts will go to prison)

# The Current Situation

## Nationally

- Black men ages 30-34 are incarcerated at more than 5 times the rate of white men.
- In 99% of US neighborhoods, Black boys in adulthood earn less than white men who grew up in households with similar incomes
- Black men 18 and over have the highest adjusted all-cause mortality rate and worst health status of any ethnic group-sex in the US





# The Solution

# Our Phased Approach

## **Phase I: Capacity Building**

Ensuring client-facing staff at The Children's Center are trained in trauma informed care. Becoming a certified trauma informed training center to ensure incoming clinical and child welfare staff are trained in trauma informed care. Serve as a community resource for trauma informed training.

# Our Phased Approach

## **Phase II: Designing Systems Change**

Convening community partners including public schools, police and other first responders, hospitals, governmental agencies and public leaders to identify legacy systems perpetuating racism and implicit bias. Develop a comprehensive strategy to reimagine systems that will serve to equip and empower people and communities to overcome adverse experiences and trauma including poverty.

# Our Phased Approach

## **Phase III: Strategic Plan Implementation and Systems Transformation**

Roll-out, implementation and on-going refinement of the strategic plan across Greater Detroit and Wayne County. Development of a replicable model for communities across the nation. The Crisis to Connection Philosophy will transform systems to improve life outcomes for Black boys.

# Crisis to Connection Framework

***Crisis to Connection*** is a philosophy that aligns beliefs, values, and actions using a trauma-informed and anti-racist framework. The ***Crisis to Connection*** philosophy transforms systems to improve the life outcomes for Black boys.

***Crisis to Connection IS:***

- Focused on transforming organizations and systems
- An intentional alignment of beliefs, perspectives, actions, and culture
- A framework for collaboration between The Children's Center, external organizations, and the Wayne County community

# System Partners

- Advocacy
- Behavioral Health/Substance Use
- Child Welfare
- Community Organizations
- Corporate
- Education/Research
- Faith-based
- Government
- Health Provider/Public Health
- Judicial/Courts
- Law Enforcement
- Philanthropy

# Our Advisory Council

The goal of the Advisory Council is to develop and provide strategic guidance to a community wide strategy to *help Black boys live their dreams.*



**GEORGE WINN**  
THE CHILDREN'S CENTER, COO



**KEVIN FISCHER**  
NAMI, EXECUTIVE DIRECTOR

**ANDREA COLE**  
FLINN FOUNDATION, EXECUTIVE  
DIRECTOR & CEO

**CHIEF ROBERT DUNLAP**  
WAYNE COUNTY SHERIFF'S DEPT

**CHRISTOPHER RUTH**  
KEY BANK, SENIOR PORTFOLIO  
MANAGER

**CHUI KAREGA**  
TCC BOD, PRESIDENT

**DAVEDA J. COLBERT, PH.D.**  
WAYNE CO. RESA, ASSOCIATE  
SUPERINTENDENT

**DR. CARMEN MCINTYRE**  
WSU, SCHOOL OF MEDICINE

**DR. TERESA HOLTROP**  
KIDS HEALTH CONNECTION, PCP

**DWAYNE A. HAYWOOD**  
MDHHS, DIRECTOR

**EDWARD JOSEPH**  
3<sup>RD</sup> CIRCUIT JUDICIAL COURT, JUDGE

**ERIC DOEH**  
DWIHN, INTERIM CEO

**LYNNETTE WRIGHT**  
MDHHS, WAYNE COUNTY CHILD &  
FAMILY SERVICES DIRECTOR

**MATTHEW HOERAUF**  
SKILLMAN FOUNDATION

**REGINA D. JEMISON**  
COUNSELOR OF LAW

**REPRESENTATIVE STEPHANIE YOUNG**  
MICHIGAN HOUSE OF  
REPRESENTATIVES, DISTRICT 8

# Stakeholder Subcommittees

- Access to Coordinated Services
- Behavioral Health for Children and Families
- Suicide Prevention and Intervention
- Trauma Awareness



# The Impact

# Outcomes

## Short Term Organizational/Stakeholder Outcomes

- Stakeholders will have an understanding of adverse childhood experiences (ACEs), trauma, implicit bias and systemic racism and its impact on Black boys
- Stakeholders will be engaged in strategic policy and practice changes to address childhood trauma, racism, implicit bias, increase trauma informed practices, and within their organizations, constituencies and/or servicing communities

# Outcomes

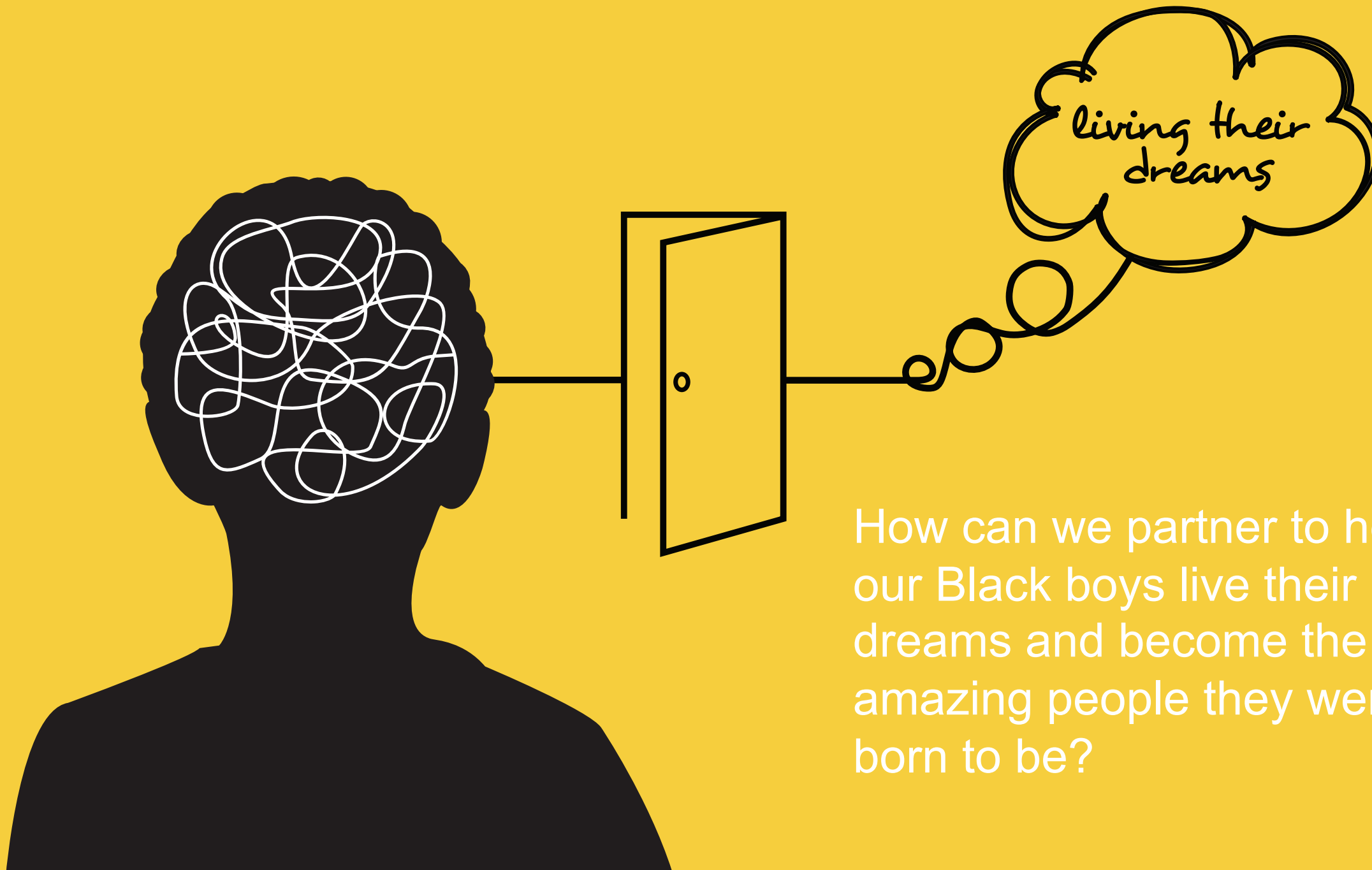
## Intermediate Outcomes

- Decrease in the systemic barriers for Black male caregivers to participate in the lives of their children
- Increase in the application of trauma-informed practices in all sectors that touch the lives of Black boys and men
- Development of a culture of collaboration among Crisis to Connection stakeholders
- Increase in the number of initiatives around implicit bias and systemic racism in Wayne County

# Outcomes

## **Long Term Outcomes for Black boys**

- Improved Mental and Physical Health
- Improved Economic Opportunities
- Improved Educational Opportunities
- Positive shift in the individual and societal perception of Black boys
- Reduction of the impact of intergenerational trauma



How can we partner to help our Black boys live their dreams and become the amazing people they were born to be?

# Join a subcommittee!

- Subcommittee work on objectives identified by the Advisory Council that feed into and drive the overall Strategic Plan
- Meet minimally once monthly (for one hour)
- Work on assignments outside of the monthly meeting
- Comprised of members of the community and are critical to the work of the Imperative

# Join a think tank conversation!

- Inform the Strategic Planning work of the Advisory Council
- Identify data points, research and methodologies to inform the work of the Imperative
- Assist with special projects and assignments such as Focus Groups

# Become an Imperative Ambassador!

- Refer an individual and/or organization
- Identify resources or connections that benefit the work of the Imperative
- Distribute information about the Imperative at your organization



# Donate!

- Provide a monetary/financial gift to help the work of the Imperative
- Donate professional services to help the work of the Imperative
- Learn more about donating on the Crisis to Connection webpage at [www.thechildrenscenter.com/crisistoconnection](http://www.thechildrenscenter.com/crisistoconnection)

# Contact Information

- Questions and inquiries can be directed to [CrisisToConnection@thechildrenscenter.com](mailto:CrisisToConnection@thechildrenscenter.com)
- Contact Kelvin Brown at 313-573-7274
- Stay up to date on activities of Crisis to Connection at [www.thechildrenscenter.com/crisistoconnection](http://www.thechildrenscenter.com/crisistoconnection)



# CRISIS TO CONNECTION

---

An Imperative For Our Black Boys | The Children's Center





# Crisis to Connection Overview

The Children's Center: Crisis to Connection - Christopher Jaco

